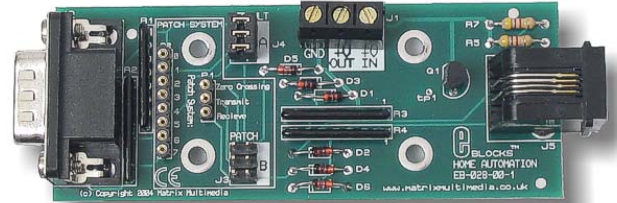


# E-blocks™ X10 home automation board

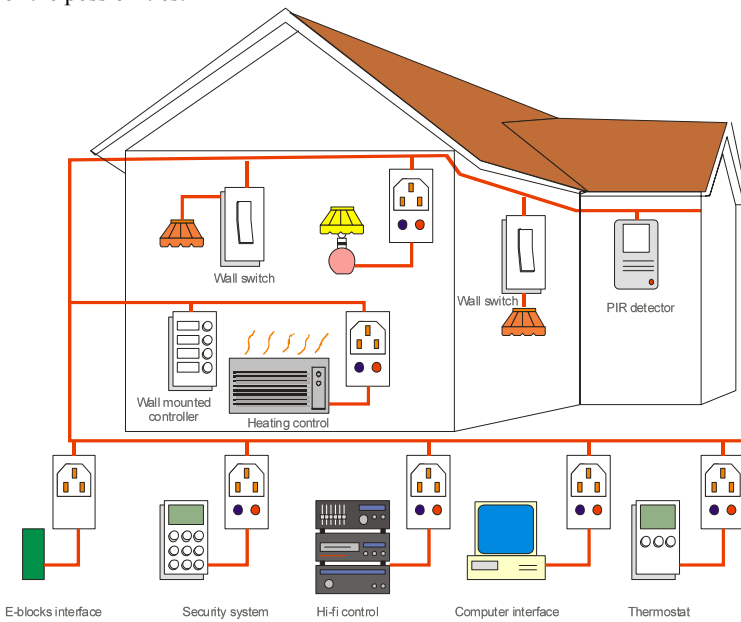
Facilitates mains-borne communication

EB028

- Links X10 transceivers to E-blocks systems
- Provides protection for the E-blocks system



X10 has become a popular standard for mains-borne communication. If you search the web you will find hundreds of X10 devices for remote switching, security, audio/visual control and other low data rate tasks. This diagram gives you some idea of the possibilities:



The X10 board plugs into a mains transceiver like the Powerhouse unit shown here.

Most X10 systems are controlled by a custom control unit or from a PC. This new X10 E-block allows you to use a low cost microcontroller – like a PICmicro - for mains-borne communications as a transmitter or receiver of X10 commands.